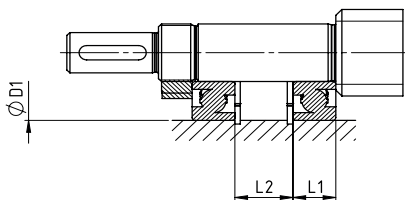
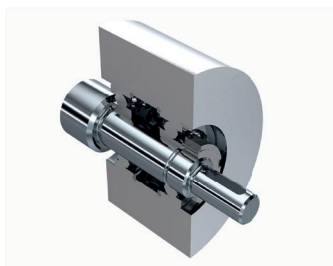


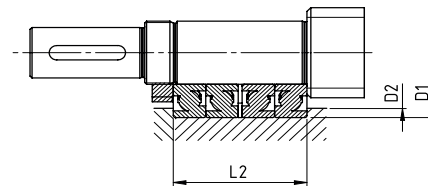
# Schrägkugellager 72...B 2RS

## Angular Contact Ball Bearing 72...B 2RS

### Technische Daten/Abmessungen *Technical data/Dimensions*



bis KGT 4010  
Sicherungsring nach DIN 472  
up to KGT 4010  
circlip according to DIN 472

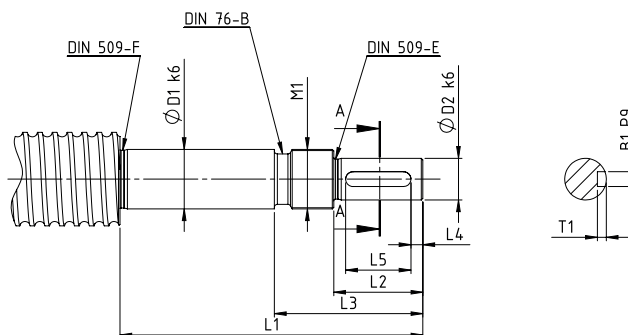


ab KGT 5010  
Passscheibe nach DIN 988  
from KGT 5010  
shim ring according to DIN 988

KGT	TGT	Abmessungen dimensions [mm]								
		$D_1$	$D_2$	$L_1$	$L_2$	Lager bearing	Tragzahl loading rate $C_{stat}$ in kN $C_{dyn}$ in kN		Wellenmutter shaft nut	Sicherungsring bzw. Passscheibe circlip or shim
1605/2005-20-50	Tr 20/22x...	32	-	10	10	7201-B-2RS	3,5	7,9	DRS12x1	32x1,5
2505-10-25-50	Tr 24/26x...	35	-	12	18	7202-B-2RS	4,4	8,9	DRS15x1	35x1,75
3205-10-20-40-60	Tr28/30/32x...	47	-	14	19	7204-B-2RS	7,8	14,9	DRS20x1	47x2
4005-10-20-40	Tr36/40/44x...	52	-	15	37	7205-B-2RS	9,0	16,2	DRS25x1,5	52x2,5
5010-20-50	Tr48/50x...	72	62	-	70	7207-B-2RS	60,0	38,0	DRS35x1,5	PS56x72x2
6310	Tr60x...	80	68	-	74	7208-B-2RS	72,0	47,0	AS40x1,5	PS63x80x2
8010	Tr70/80x...	100	85	-	84,5	7211-BE-2RS	92,4	72,0	A55x2	PS80x100x0,5

### Endenbearbeitung Form L für Lagereinheiten 72...B 2RS

#### End Machining form L for Bearing Units 72...B 2RS



Endenbearbeitung für einreihiges Schrägkugellager der Reihe 72. *End machining for single row angular contact ball bearing of series 72.*

Bezeichnung designation	Abmessungen dimensions [mm]										Lager bearing
	TGS/KGS	$D_1 k_6$	$D_2 k_6$	$L_1$	$L_2$	$L_3$	$L_4$	$L_5$	$M_1$	$B_x T_1$	
L12	Gewindekern- durchmesser thread core diameter $d_2 > d_1$	12	9	58	20	30	2,5	16	M12x1	3x1,8	7201-B-2RS
L15		15	11	73	23	33	3,5	16	M15x1	4x2,5	7202-B-2RS
L20		20	14	88	30	43	4	22	M20x1	5x3	7204-B-2RS
L25		25	19	120	40	55	6	28	M25x1,5	6x3,5	7205-B-2RS
L35		35	28	145	60	77	10	40	M35x1,5	8x4	7207-B-2RS
L40		40	36	175	80	103	8,5	63	M40x1,5	10x5	7208-B-2RS
L55		55	48	215	110	133	10	90	M55x2	14x9	7211-B-2RS